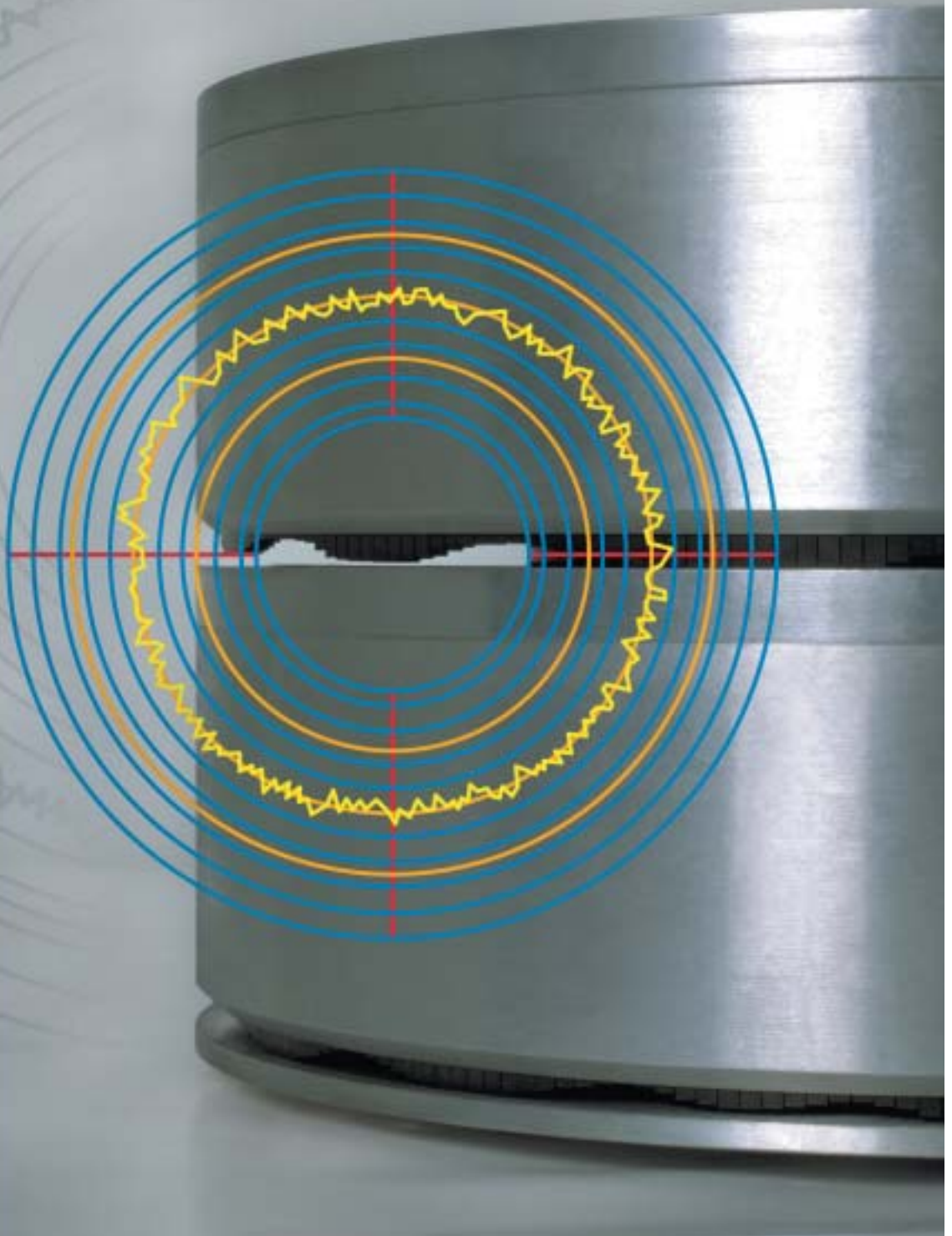




IGC Internal Gauge Control



ADDEX INC.

154 Maple Street
Stoughton MA 02072 USA
Tel: 781 344 5800
Fax: 781 344 5766
Email: addex@addexinc.com
www.addexinc.com

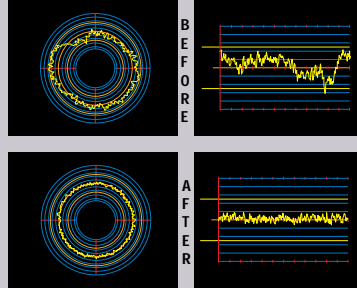
IGC Internal Gauge Control



THE CONSOLE

(74"H x 31.5" x 24")
(1880 x 810 x 600mm)

A self-standing operator-controlled station with an industrial-grade PC, a 15" (381mm) LCD display, a keyboard tray, and a laser printer.



THE IGC PANCAKE

Two IGC pancakes with sliding teeth provide preferential cooling on the inside of the bubble. A scanning actuator raises or lowers the 1/8" (3mm) wide teeth as needed, to open or close the 1/4" (6mm) air gap.



THE LIVE RING (Carousel)

Oscillates the capacitive or air-cushioned nuclear thickness sensor around the bubble. It is located between the highest frost line and the collapsers.

FEATURES

The system uses the air gaps of two Internal Bubble Cooling Pancakes to control the variations in film thickness. The lower pancake with sliding teeth does the bulk of the gauge correction at the melt's exit from the die, where the film is most susceptible to thickness changes due to cooling. The second toothed pancake improves the already drastic corrections made by the first one.

The Very High Resolution of the control comes from:

- the multitude of the only 1/8" (3mm) wide teeth that can be moved to any up or down position within the 1/4" (6mm) air gap;
- the proximity (approximately 1/2" (12mm) of the bubble to the pancake's air gap, which allows for very little diffusion of the controlling air.

The High Control Accuracy is assured by RS-485 converted signals between sensors and computer as well as from the computer to the actuators in the pancakes.

OTHER ADDEX PRODUCTS

- Dies
- Air Rings
- Internal Bubble Cooling
- Other Automatic Gauge Control
- Extruders
- Oscillating Haul-offs
- Winders (Surface/Center)
- Complete Film Lines



ADDEX INC.

154 Maple Street
Stoughton MA 02072 USA
Tel: 781 344 5800
Fax: 781 344 5766
Email: adDEX@adDEXinc.com
www.adDEXinc.com